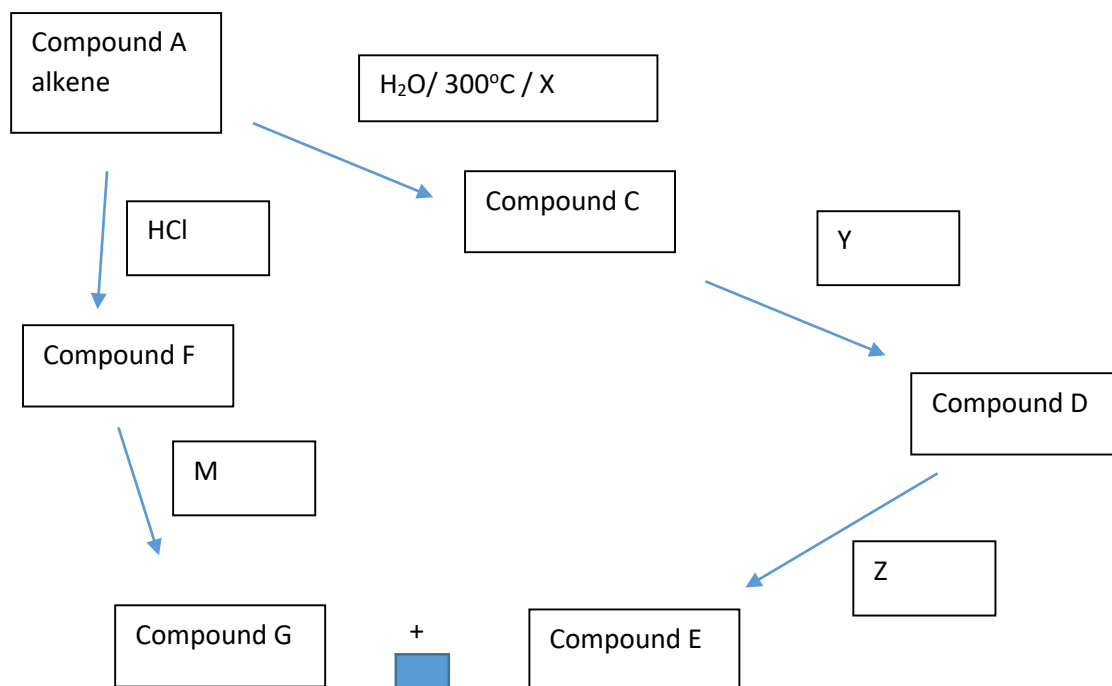
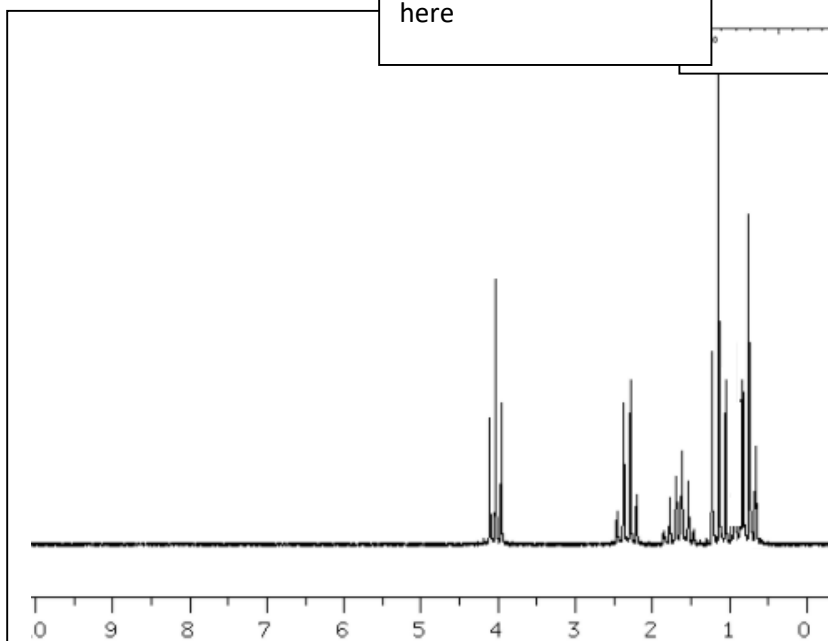
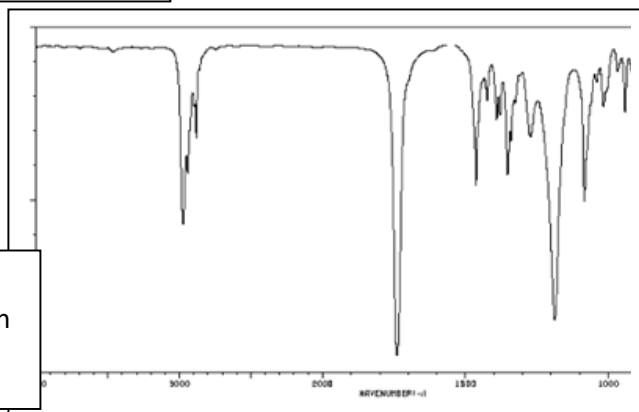


Friday worksheet - 5 – ^1H NMR, IR, organic pathways



B ($\text{C}_6\text{H}_{12}\text{O}_2$)

The IR and ^1H NMR of compound B are shown here



Identify:

- B _____
- E _____
- C _____
- F _____
- G _____
- X _____
- Y _____
- Z _____
- M _____

To what group of organic molecules does D belong to?